

## HEALTHCARE HEAT & MASSAGE SYSTEM

C **RA** US



### THERAPEUTIC COMFORT

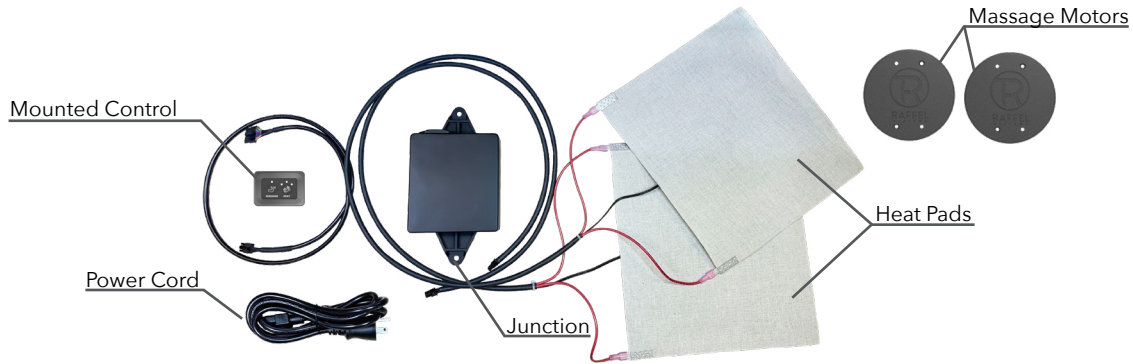
Whether a clinical or home health environment, our healthcare heat and massage system enhances the entire patient experience.

Our system includes:

- Mounted control
- Junction
- Power cord
- Heat pad(s)
- Massage motors



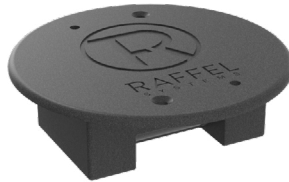
## HEAT AND MASSAGE SYSTEM OVERVIEW



### MASSAGE MOTORS

P/N: MTR 24 01

- Choose between two or four massage motor systems
- Brushless massage motors
  - Efficient and quieter than other motor types



### MOUNTED CONTROL

P/N: CTR 4H 01

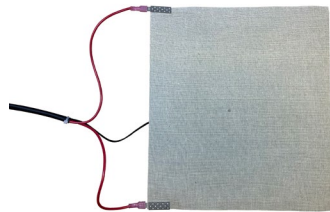
- Screw mounted
- Three heat levels: low, medium, high
- Provides heat in the seat and back when paired with dual heat pad systems
- Controls on/off massage



### HEAT PAD

P/N: HTP 16W24V 01

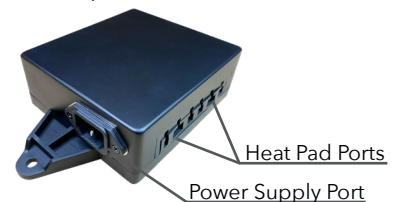
- Carbon fiber
- Universal heat distribution
- Customizable sizes



### JUNCTION

P/N: JCT 4H 01

- Connects to power supply, heat pads, massage motors, and power supply cord
- Can be mounted using strap or screws
- 12V accessory port for USB charging or other options



### POWER CORD

P/N: COR 66 01

- Certified for healthcare use
- Compatible with 120V outlet
- Length: 6'

